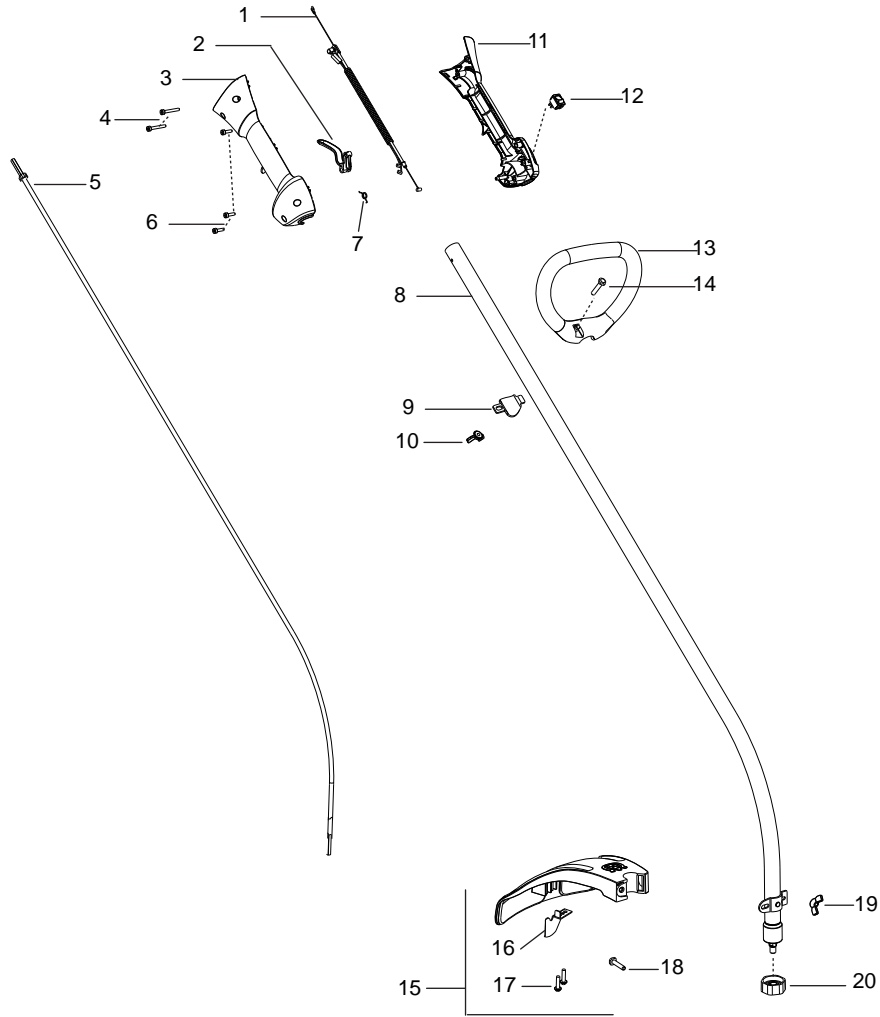
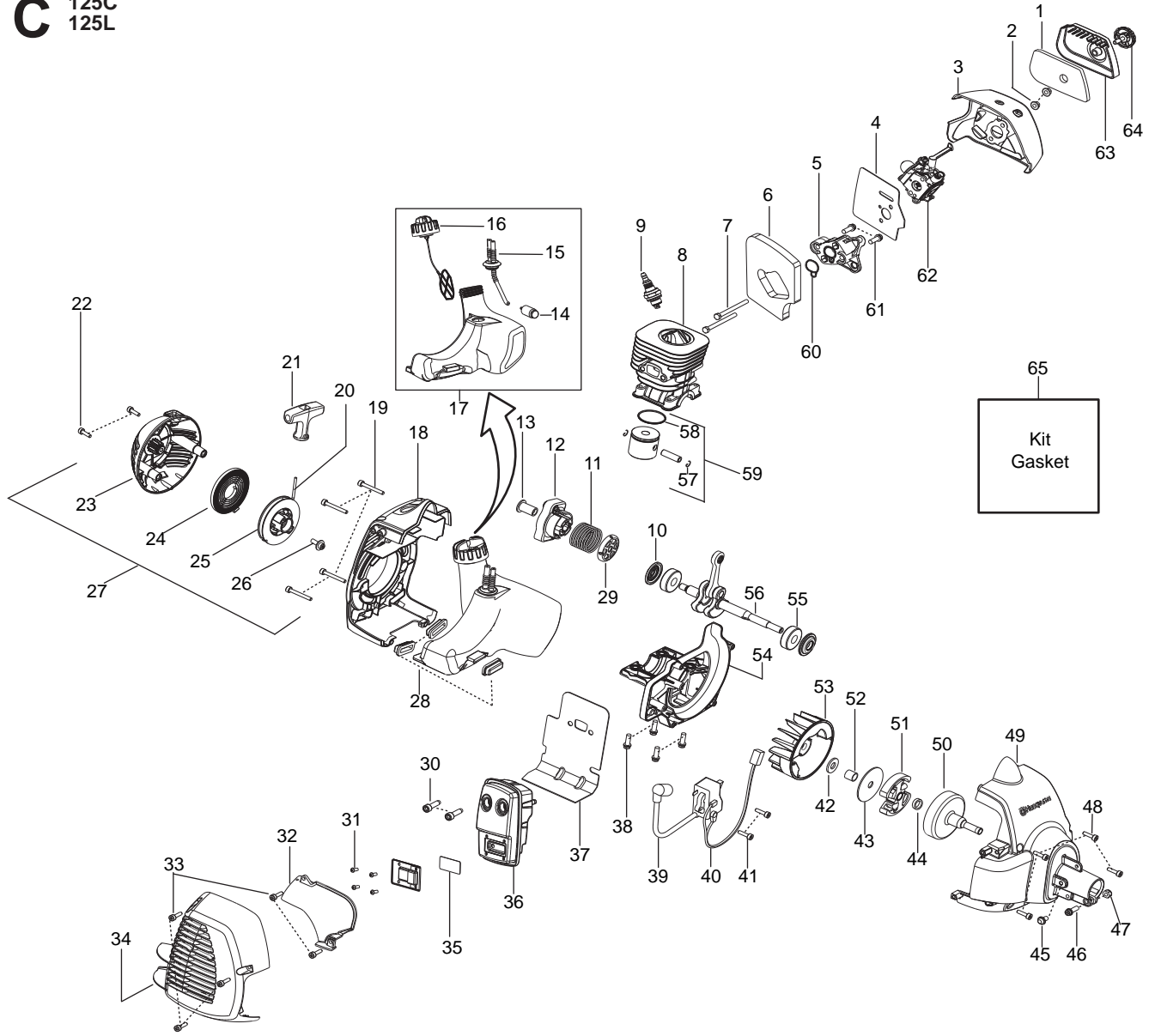


**A** 125C



Ref.	Part No.	Description	Ref.	Part No.	Description
1.	530 15 05-61	Assy-Cable/Wire Harness	19.	530 01 61-52	Wingnut
2.	530 05 98-07	Trigger	20.	530 09 63-09	Assy-Dust cup
3.	545 02 42-01	Housing-Throttle (RH)			
4.	530 01 64-48	Screw			
5.	545 00 75-08	Flexshaft			
6.	530 01 64-49	Screw			
7.	530 01 64-54	Spring-Trigger			
8.	545 03 10-01	Kit-Driveshaft			
9.	530 05 91-85	Clamp-Handle			
10.	530 01 61-52	Wingnut			
11.	530 05 78-56	Housing-Throttle (LH)	530 16 57-24		Manual <b>Not Shown</b>
12.	545 03 06-01	Kit-Switch	530 16 39-46		Decal-Warning <b>Not Shown</b>
13.	530 15 00-76	Handle-Assist			
14.	530 01 58-20	Bolt			
15.	545 03 11-01	Kit-Shield (Incl. 16,17,18,19)			
16.	530 05 22-87	Limiter-Line			
17.	530 01 58-14	Screw			
18.	530 01 58-20	Bolt			

**C** 125C  
125L



Ref.	Part No.	Description	Ref.	Part No.	Description
1.	530 15 02-53	Filter	35.	545 03 05-01	Kit-Spark Arrestor (Incl. 31)
2.	530 01 61-01	Nut-Carb. Screw	36.	530 05 78-47	Assy-Muffler
3.	530 05 78-45	Air Box	37.	545 03 01-01	Kit-Gasket (metal)
4.	545 03 01-01	Kit-Gasket (carb.)	38.	530 01 58-97	Screw
5.	530 03 55-96	Adaptor -Carb.	39.	530 03 92-24	Module
6.	545 04 70-01	Foam	40.	530 03 92-27	Assy-Leadwire
7.	530 01 64-00	Bolt	41.	530 01 64-56	Screw
8.	545 00 10-01	Cylinder	42.	530 01 60-30	Washer
9.	503 23 51-09	Plug-Spark (RCJ-6Y)	43.	530 09 41-89	Washer-Clutch
10.	545 03 01-01	Kit-Gasket (crankshaft seal)	44.	545 04 29-01	Spacer-Clutch
11.	530 01 64-50	Spring-Starter Cup	45.	530 01 64-69	Screw
12.	530 15 05-68	Assy-Starter Cup	46.	530 01 64-70	Screw
13.	530 05 98-00	Coupling-Starter	47.	530 40 30-94	Nut
14.	530 09 56-46	Assy-Fuel Filter	48.	530 01 64-56	Screw
15.	545 03 02-01	Kit-Fuel Line	49.	545 01 75-01	Assy-Fan Housing
16.	530 15 03-50	Assy-Cap w/retainer	50.	530 15 00-39	Assy-Clutch Drum
17.	530 05 78-53	Assy-Fuel Tank (Incl. 14,15,16)	51.	530 05 51-22	Assy-Clutch
18.	530 05 78-51	Shroud-Rear	52.	530 05 78-52	Spacer
19.	530 01 64-48	Screw	53.	530 03 92-42	Flywheel
20.	545 02 99-01	Kit-Rope	54.	545 00 18-01	Crankcase
21.	530 15 03-18	Handle-Starter	55.	545 01 34-01	Bearing
22.	530 01 59-54	Screw	56.	545 03 00-01	Kit-Crankshaft
23.	545 02 96-01	Starter Housing w/eyelet	57.	530 01 51-62	Retainer-Piston Pin
24.	545 02 98-01	Kit-Starter Spring	58.	530 01 92-83	Ring-Piston
25.	545 02 97-01	Kit-Starter Pulley	59.	545 03 03-01	Kit-Piston (Incl. 57,58)
26.	530 01 64-68	Screw	60.	545 03 01-01	Kit-Gasket (adaptor seal)
27.	530 15 05-67	Assy-Starter Hsg. (Incl. 20,21,23,24,25,26)	61.	530 01 58-97	Screw
28.	530 05 97-80	Isolator-Tank	62.	545 03 04-01	Kit-Carb. (Incl. gasket)
29.	530 01 64-75	Washer-Starter	63.	530 05 78-46	Cover-Air Box
30.	530 05 89-82	Bolt-Muffler	64.	530 05 97-96	Assy-Knob
31.	530 01 54-96	Screw	65.	545 03 01-01	Kit-Gasket (Incl. 4,10,37,60)
32.	530 15 04-40	Shield-Heat			
33.	530 01 64-49	Screw			
34.	530 05 97-84	Guard-Muffler		530 05 87-09	Bulb-Purge <b>Not Shown</b>